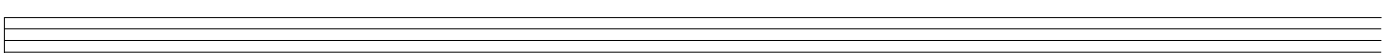
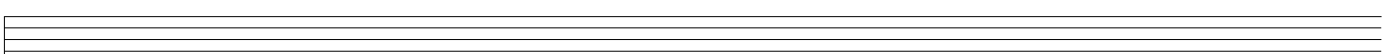
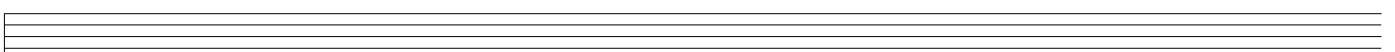
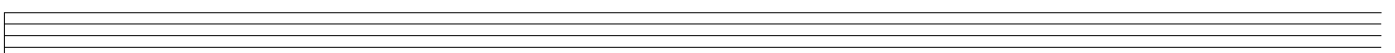
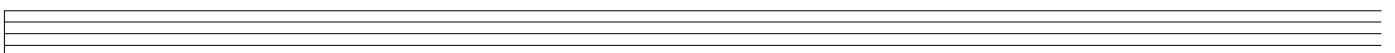
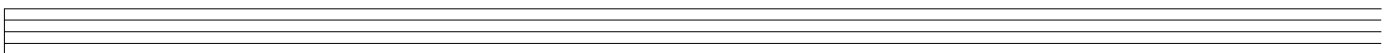
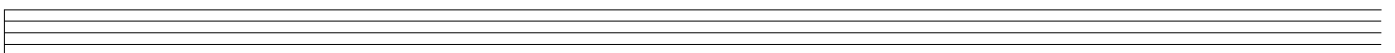
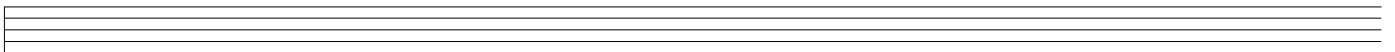
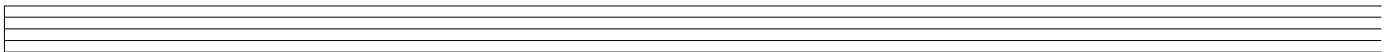
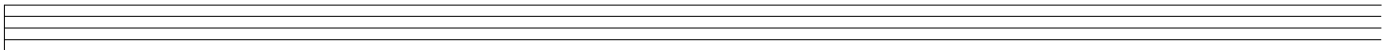
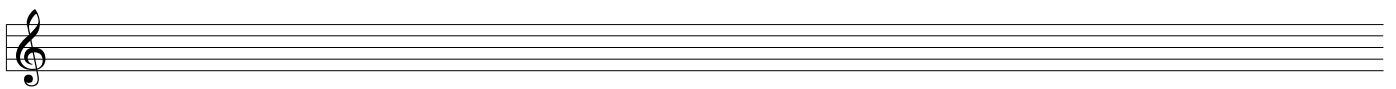
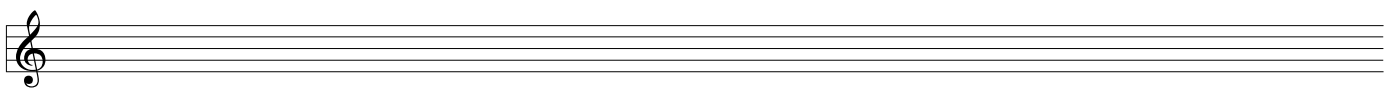
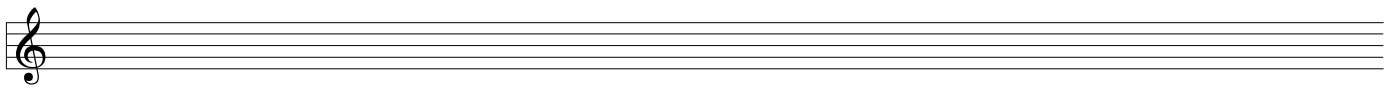
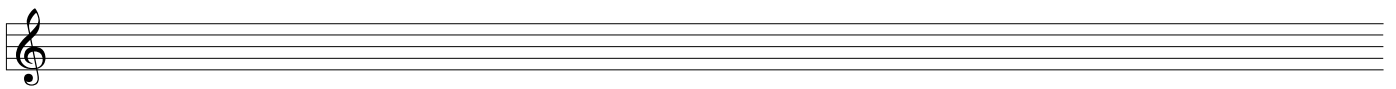
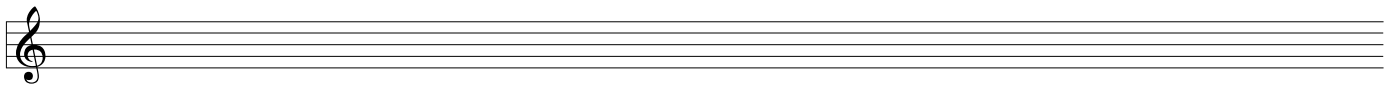
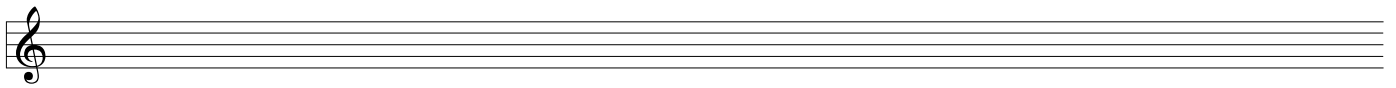
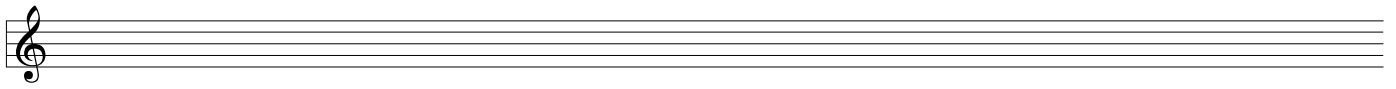
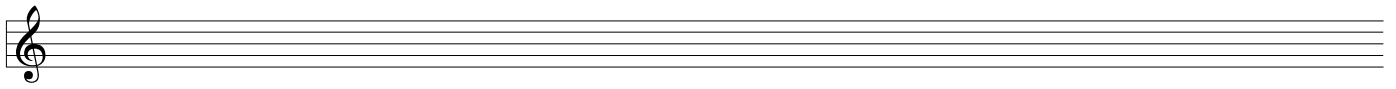
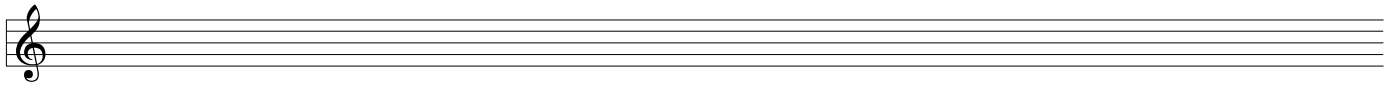
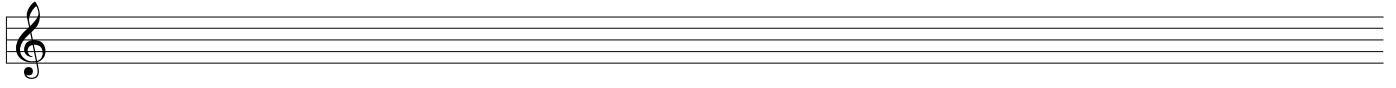
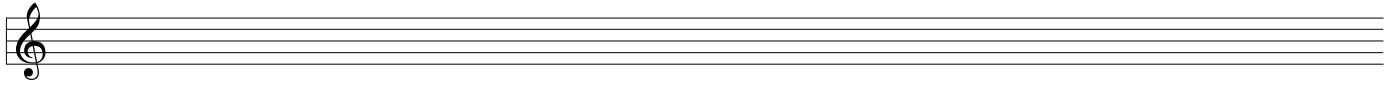
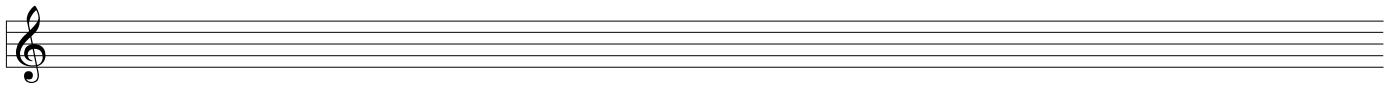


Notenpapier von musikgra

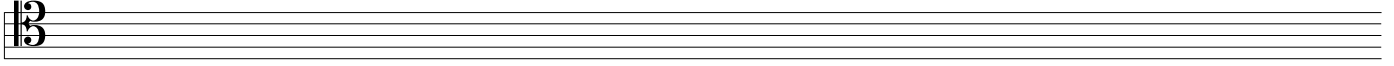
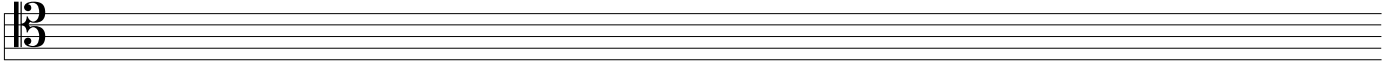
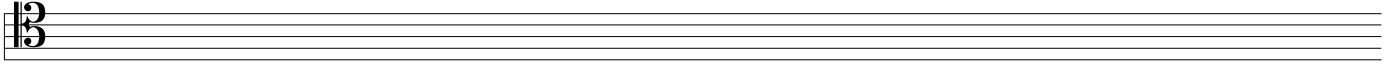
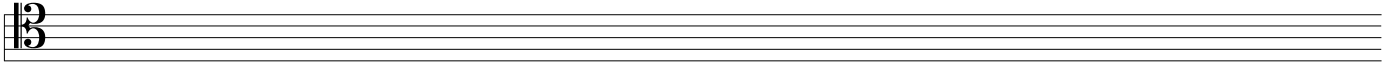
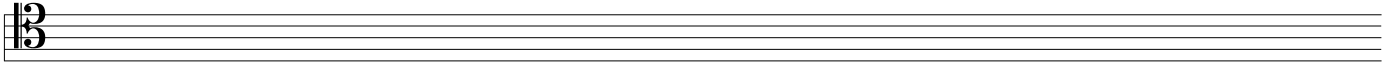
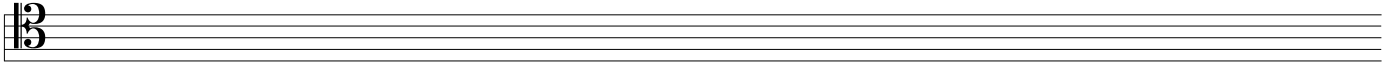
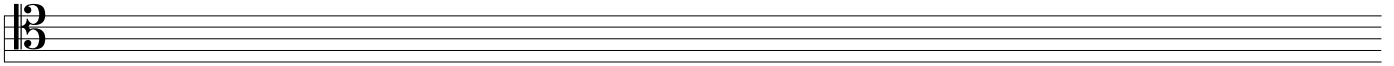
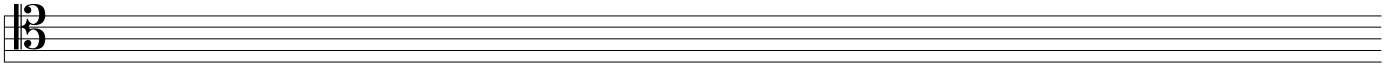
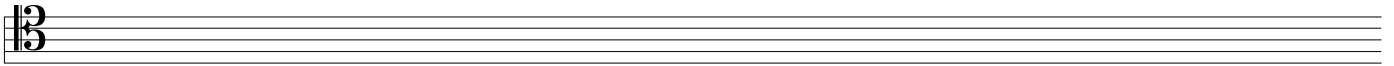
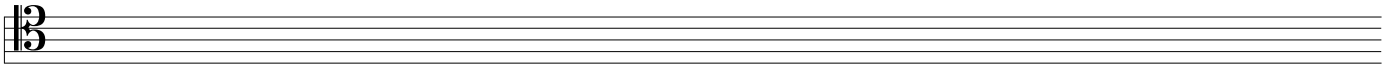
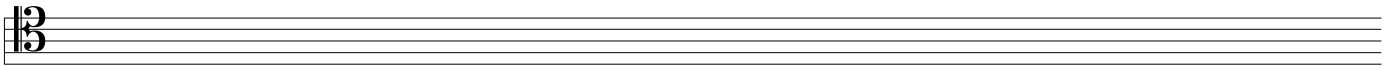
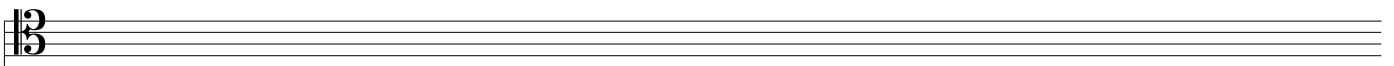
Type: Groß-Mittel

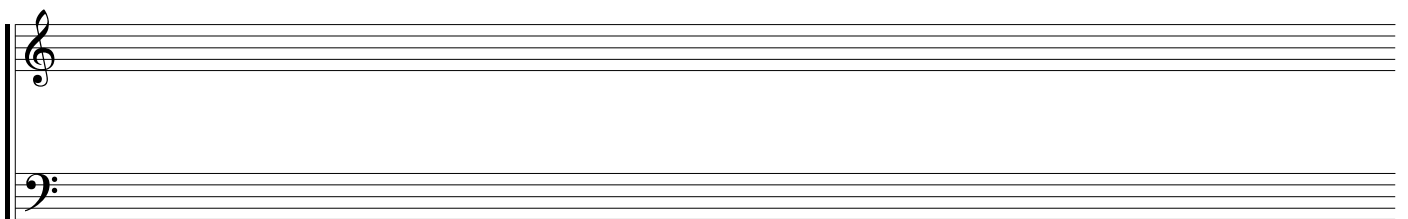
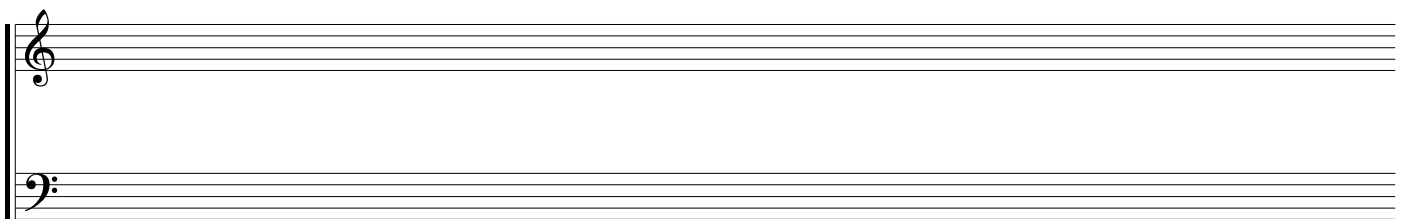
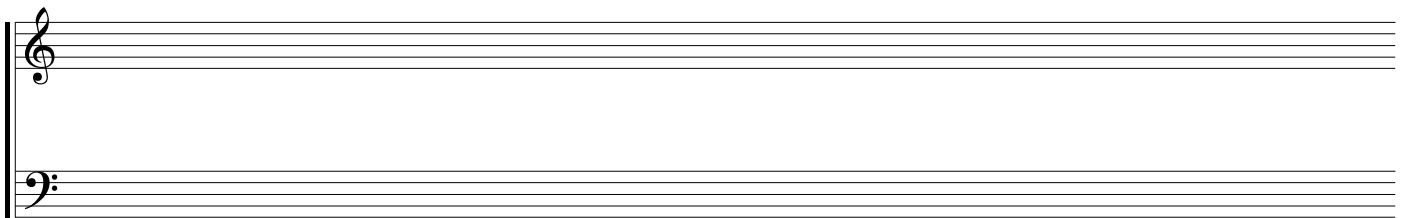
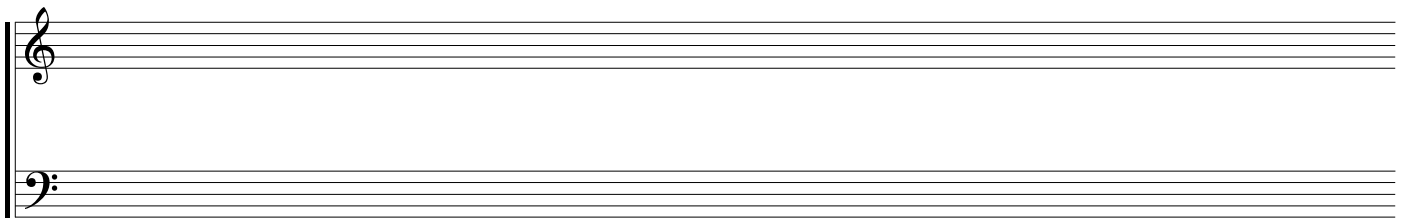
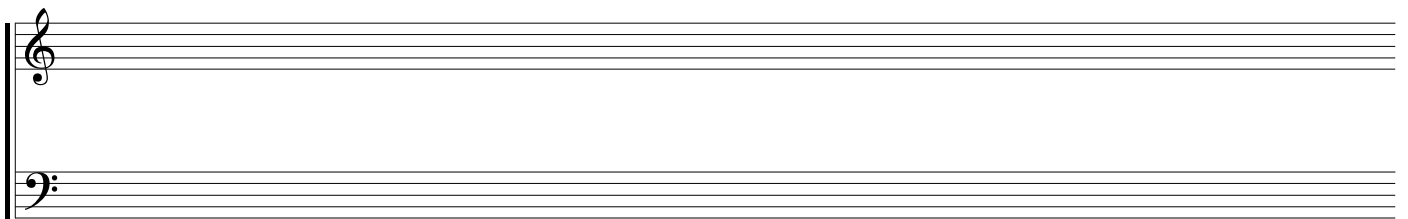
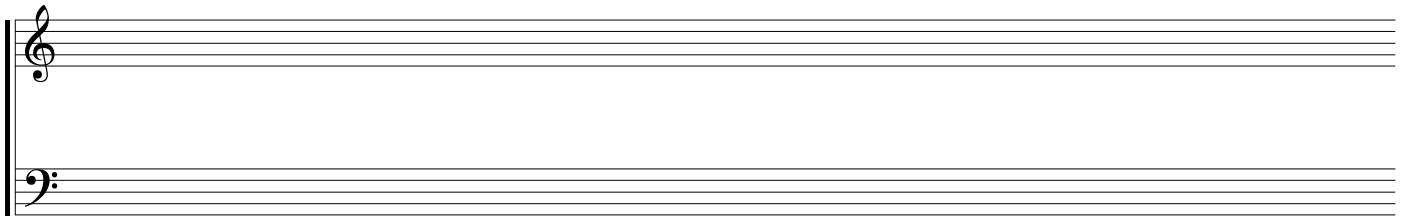
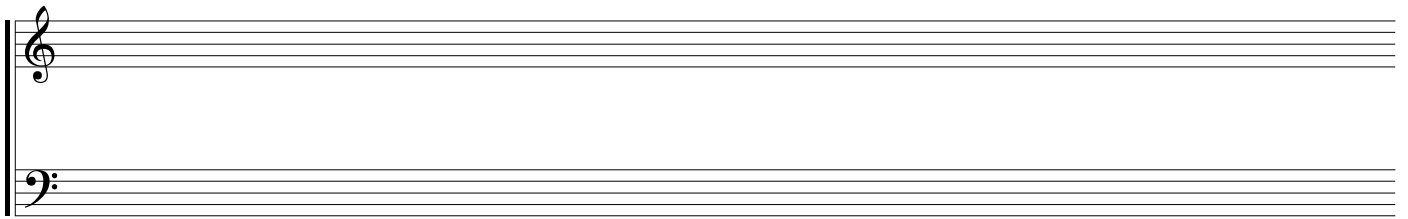




This image shows a page of ten blank musical staves. Each staff is a five-line system with a bass clef (F-clef) positioned at the beginning. The staves are arranged vertically and are completely empty, providing a template for musical notation.

This image shows a page of 12 blank musical staves. Each staff is a five-line system with a treble clef (C-clef) positioned at the beginning. The staves are arranged vertically and are completely empty, providing a template for musical notation.





A system of five musical staves. The top two staves are empty. The third staff from the top contains a treble clef. The bottom two staves contain a bass clef. A vertical bar line is positioned at the beginning of the system.

A system of five musical staves. The top two staves are empty. The third staff from the top contains a treble clef. The bottom two staves contain a bass clef. A vertical bar line is positioned at the beginning of the system.

A system of five musical staves. The top two staves are empty. The third staff from the top contains a treble clef. The bottom two staves contain a bass clef. A vertical bar line is positioned at the beginning of the system.

A system of five musical staves. The top two staves are empty. The third staff from the top contains a treble clef. The bottom two staves contain a bass clef. A vertical bar line is positioned at the beginning of the system.

A system of five musical staves. The top two staves are empty. The third staff from the top contains a treble clef. The bottom two staves contain a bass clef. A vertical bar line is positioned at the beginning of the system.



A musical staff system consisting of three horizontal staves. The top two staves are empty. The bottom staff has the letters 'T', 'A', and 'B' stacked vertically on its left side.

A musical staff system consisting of three horizontal staves. The top two staves are empty. The bottom staff has the letters 'T', 'A', and 'B' stacked vertically on its left side.

A musical staff system consisting of three horizontal staves. The top two staves are empty. The bottom staff has the letters 'T', 'A', and 'B' stacked vertically on its left side.

A musical staff system consisting of three horizontal staves. The top two staves are empty. The bottom staff has the letters 'T', 'A', and 'B' stacked vertically on its left side.

A musical staff system consisting of three horizontal staves. The top two staves are empty. The bottom staff has the letters 'T', 'A', and 'B' stacked vertically on its left side.

A musical staff system consisting of three horizontal staves. The top two staves are empty. The bottom staff has the letters 'T', 'A', and 'B' stacked vertically on its left side.

A musical staff system consisting of three horizontal staves. The top two staves are empty. The bottom staff has the letters 'T', 'A', and 'B' stacked vertically on its left side.

A musical staff system consisting of three horizontal staves. The top two staves are empty. The bottom staff has the letters 'T', 'A', and 'B' stacked vertically on its left side.

A musical staff system consisting of three staves. The top two staves are blank. The bottom staff has a brace on the left side with the letters 'T', 'A', and 'B' stacked vertically next to it.

A musical staff system consisting of three staves. The top two staves are blank. The bottom staff has a brace on the left side with the letters 'T', 'A', and 'B' stacked vertically next to it.

A musical staff system consisting of three staves. The top two staves are blank. The bottom staff has a brace on the left side with the letters 'T', 'A', and 'B' stacked vertically next to it.

A musical staff system consisting of three staves. The top two staves are blank. The bottom staff has a brace on the left side with the letters 'T', 'A', and 'B' stacked vertically next to it.

A musical staff system consisting of three staves. The top two staves are blank. The bottom staff has a brace on the left side with the letters 'T', 'A', and 'B' stacked vertically next to it.

A musical staff system consisting of three staves. The top two staves are blank. The bottom staff has a brace on the left side with the letters 'T', 'A', and 'B' stacked vertically next to it.

A musical staff system consisting of three staves. The top two staves are blank. The bottom staff has a brace on the left side with the letters 'T', 'A', and 'B' stacked vertically next to it.

A musical staff system consisting of three staves. The top two staves are blank. The bottom staff has a brace on the left side with the letters 'T', 'A', and 'B' stacked vertically next to it.