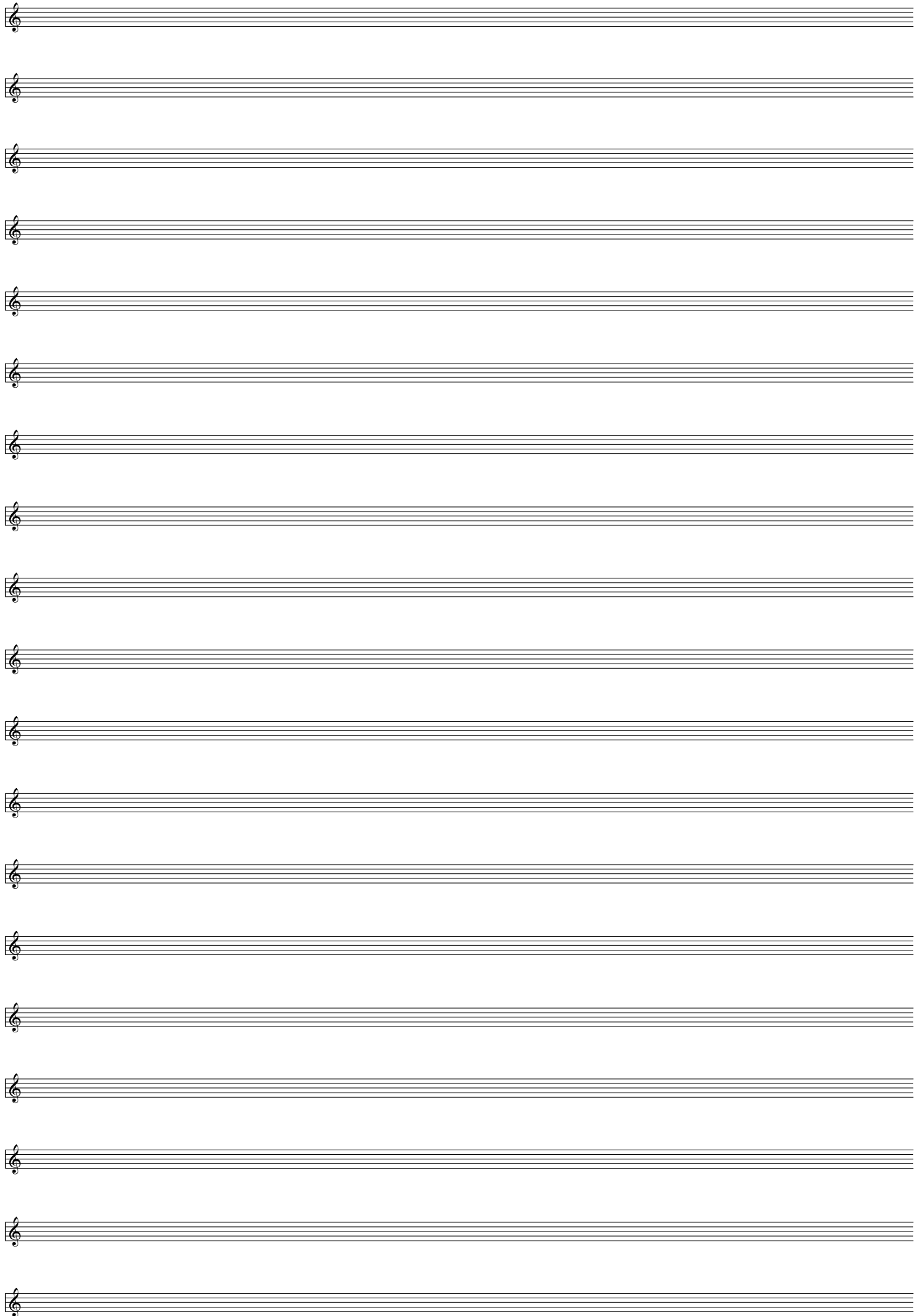
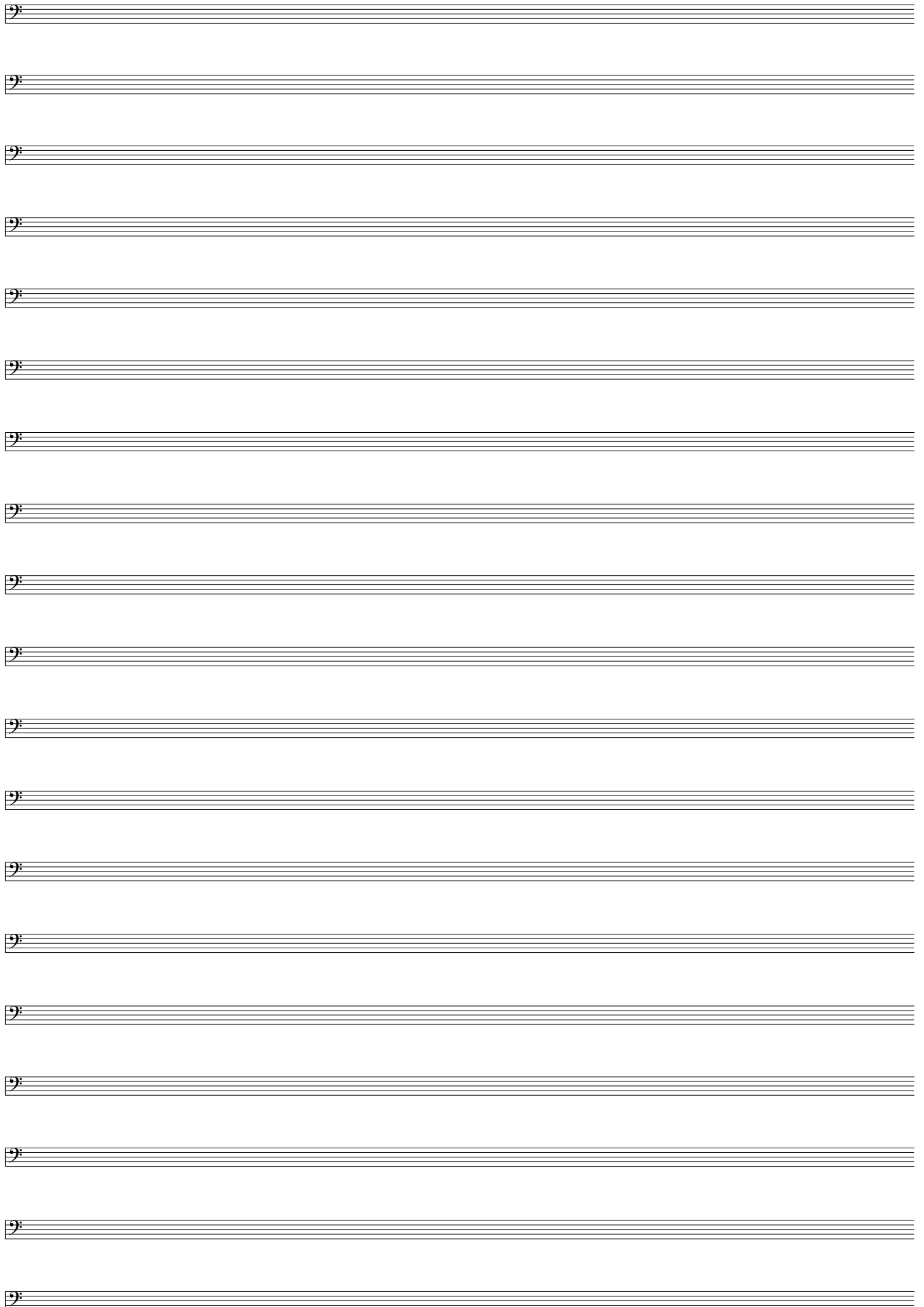


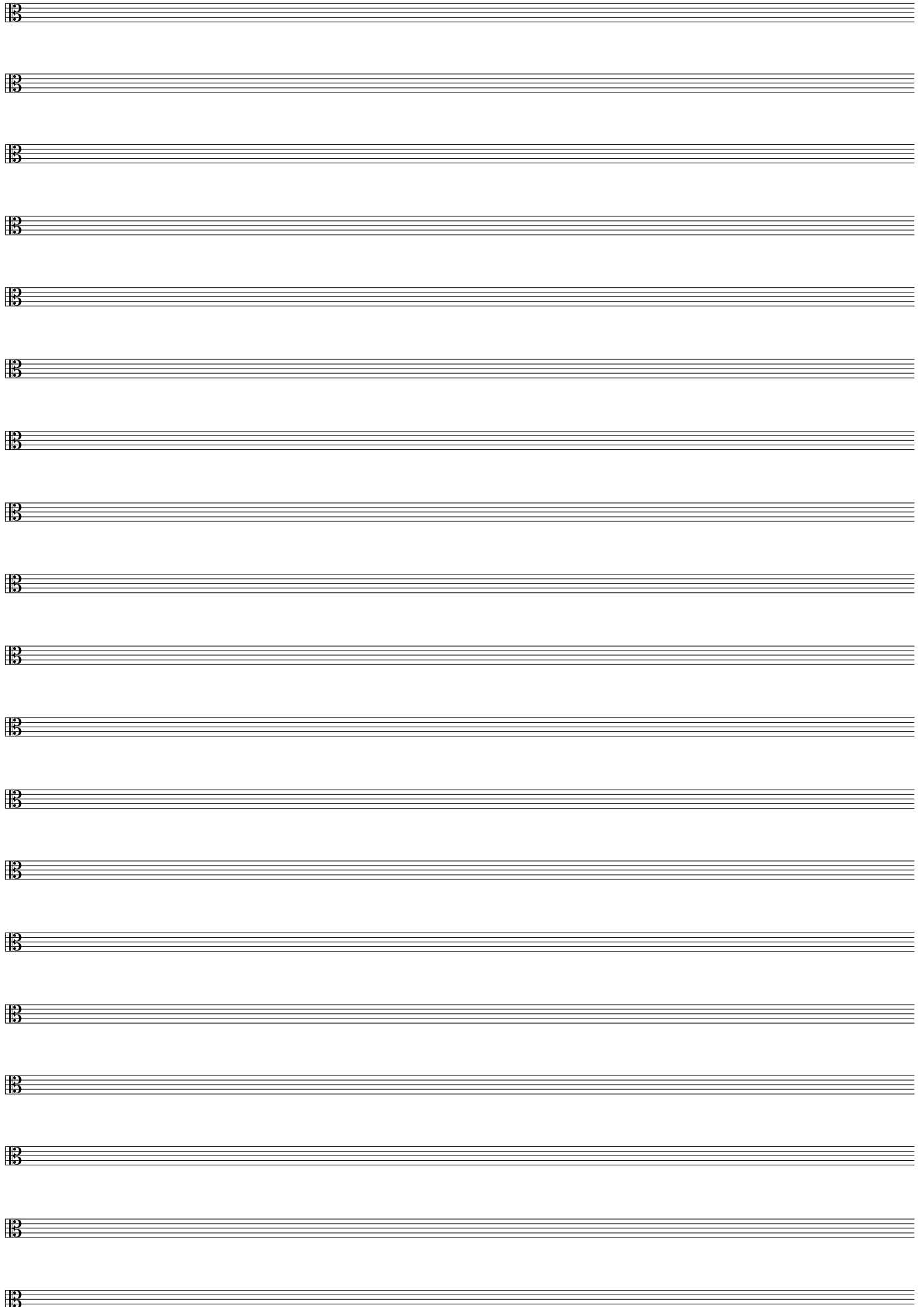
Notenpapier von **musikgrad.de**

Type: Pearl

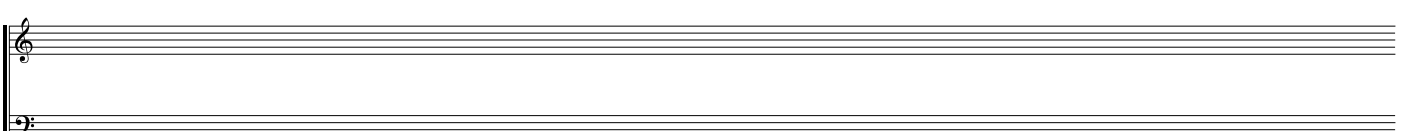
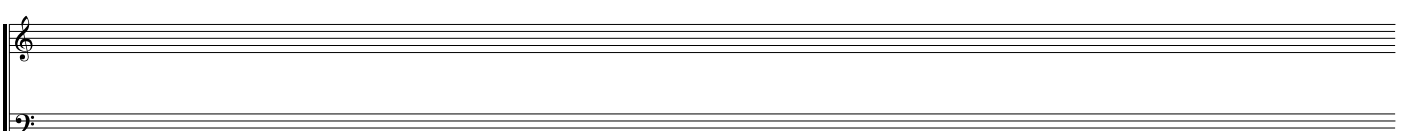
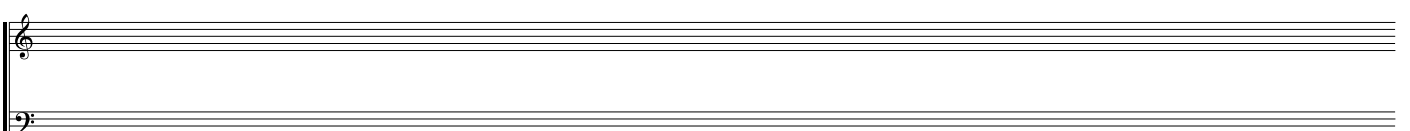
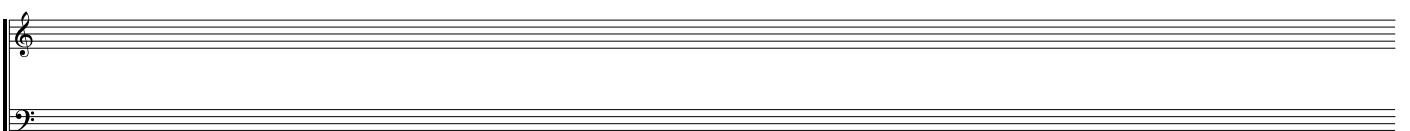
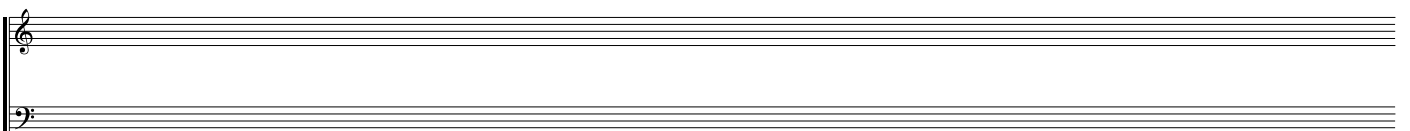
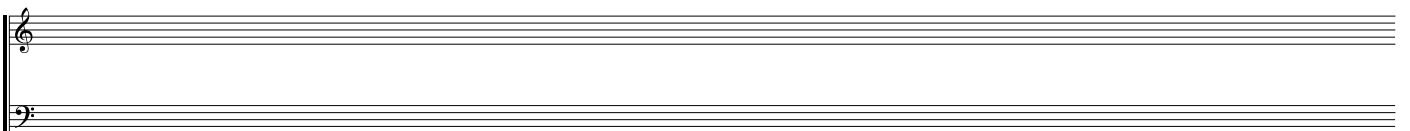
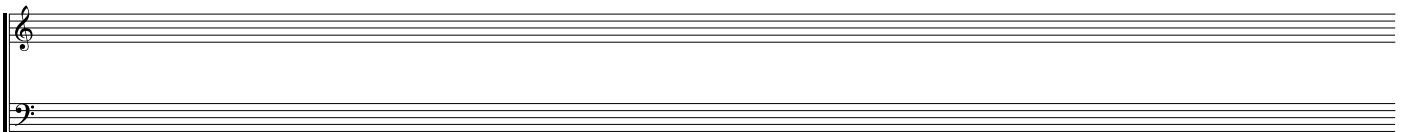
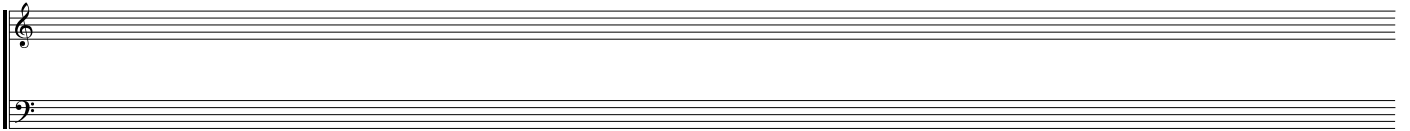
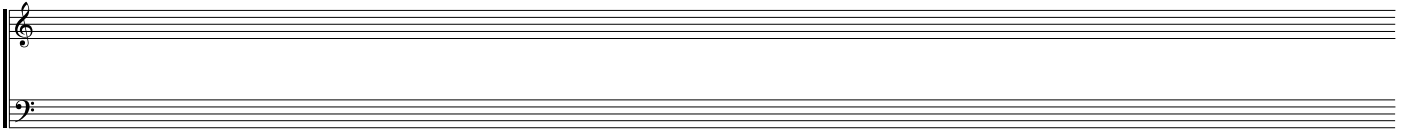
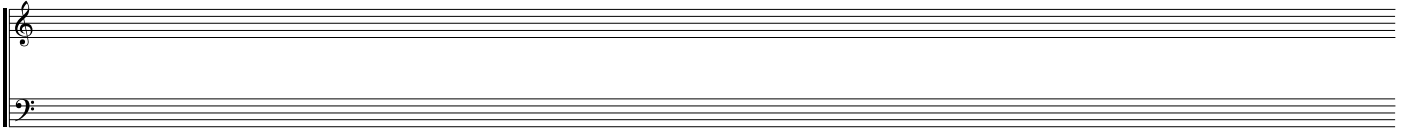


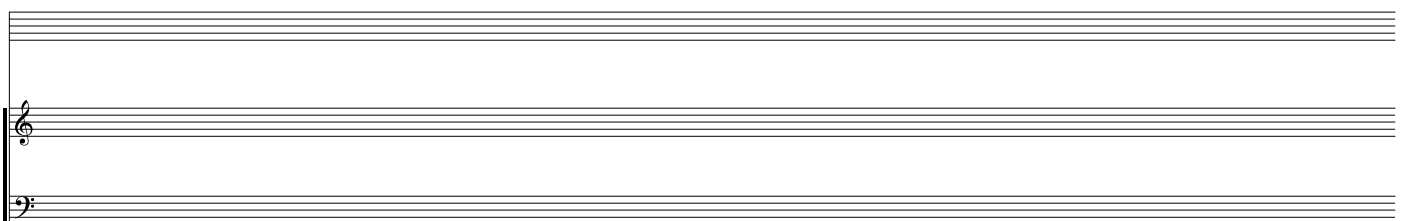
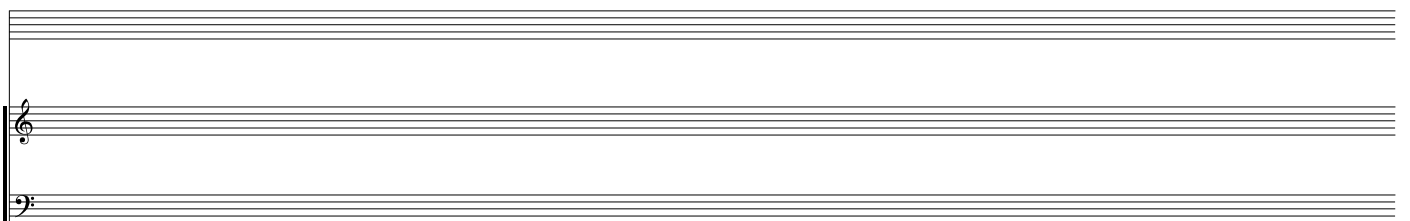
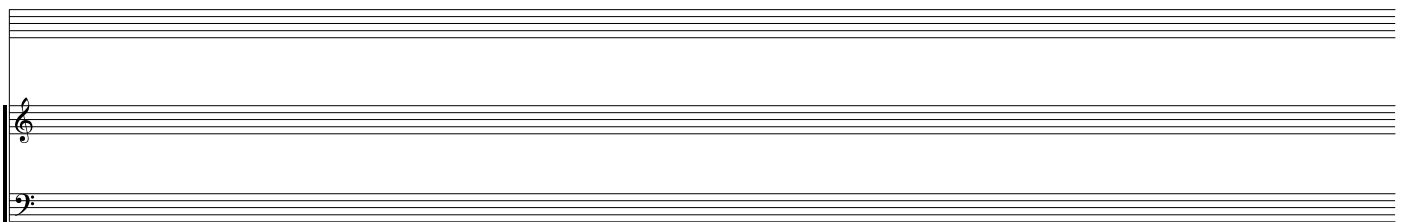
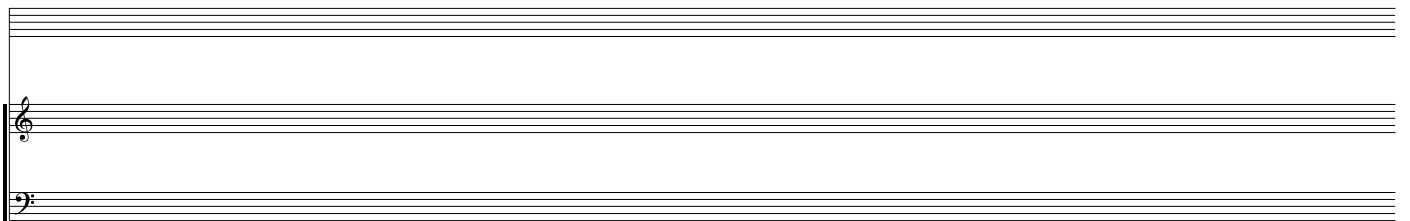
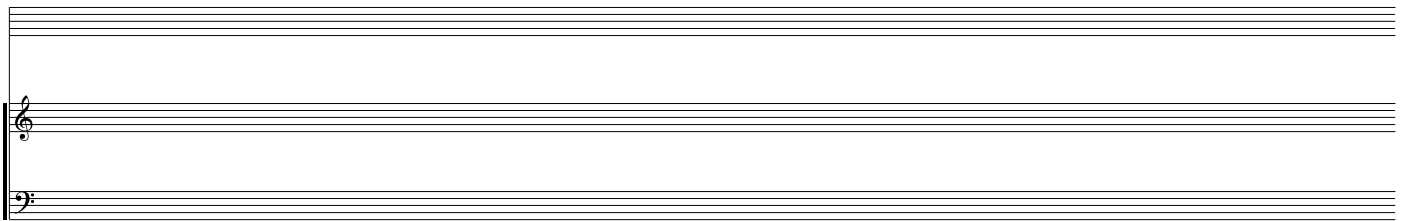
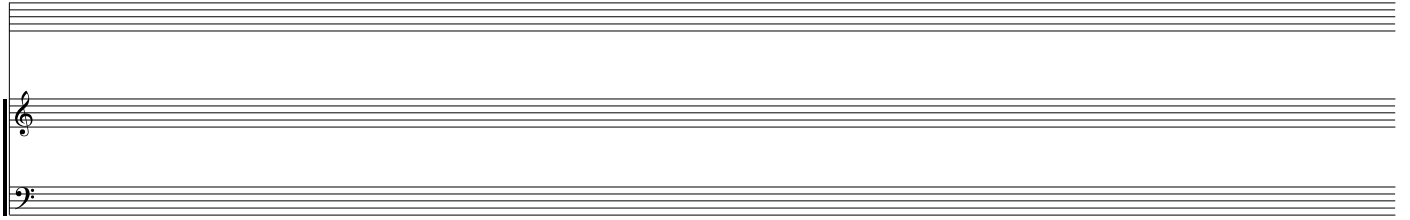
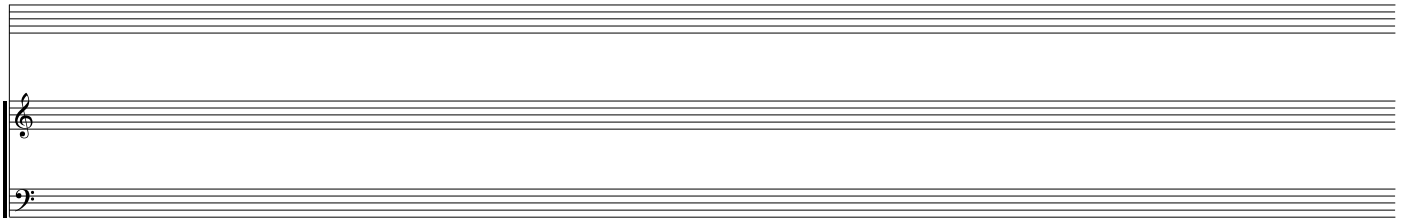






This image shows a blank sheet of music paper with 18 horizontal staves. Each staff is composed of five lines and begins with a treble clef (C-clef) on the first line. The staves are arranged vertically and are completely empty, with no musical notes or other markings.





A musical staff system consisting of three staves. The top two staves are blank. The bottom staff has the letters 'T', 'A', and 'B' written vertically on its left side.

A musical staff system consisting of three staves. The top two staves are blank. The bottom staff has the letters 'T', 'A', and 'B' written vertically on its left side.

A musical staff system consisting of three staves. The top two staves are blank. The bottom staff has the letters 'T', 'A', and 'B' written vertically on its left side.

A musical staff system consisting of three staves. The top two staves are blank. The bottom staff has the letters 'T', 'A', and 'B' written vertically on its left side.

A musical staff system consisting of three staves. The top two staves are blank. The bottom staff has the letters 'T', 'A', and 'B' written vertically on its left side.

A musical staff system consisting of three staves. The top two staves are blank. The bottom staff has the letters 'T', 'A', and 'B' written vertically on its left side.

A musical staff system consisting of three staves. The top two staves are blank. The bottom staff has the letters 'T', 'A', and 'B' written vertically on its left side.

A musical staff system consisting of three staves. The top two staves are blank. The bottom staff has the letters 'T', 'A', and 'B' written vertically on its left side.

A musical staff system consisting of three staves. The top two staves are blank. The bottom staff has the letters 'T', 'A', and 'B' written vertically on its left side.

A musical staff system consisting of three staves. The top two staves are blank. The bottom staff has the letters 'T', 'A', and 'B' written vertically on its left side.

A musical staff system consisting of three staves. The top two staves are blank. The bottom staff has the letters 'T', 'A', and 'B' written vertically on its left side.

