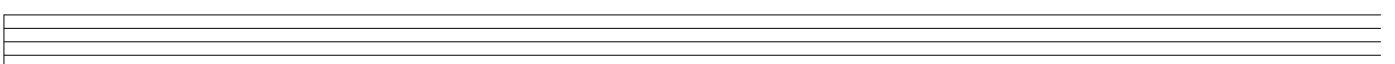
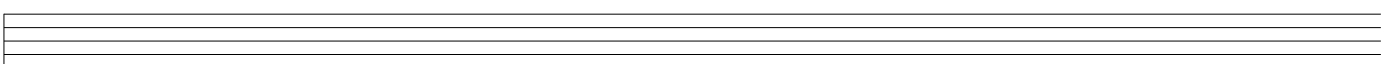
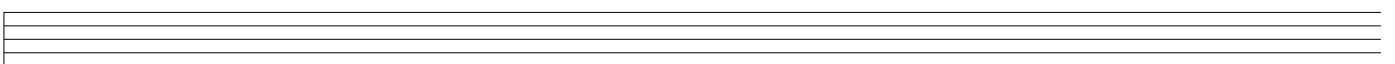
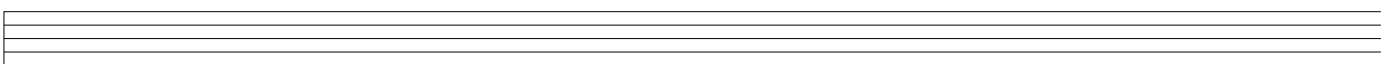
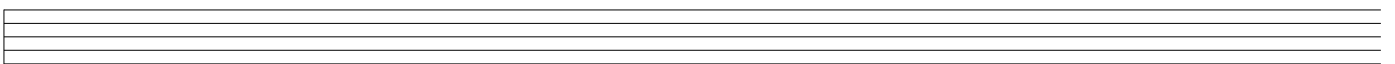
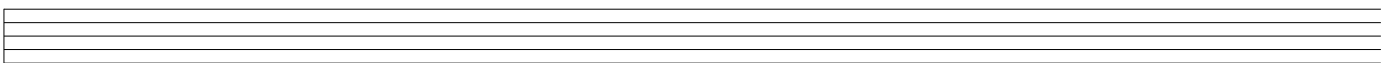
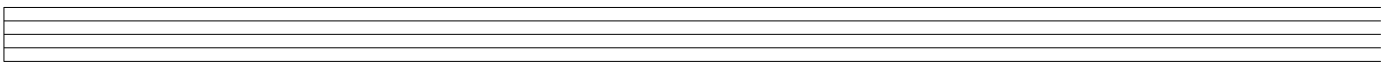
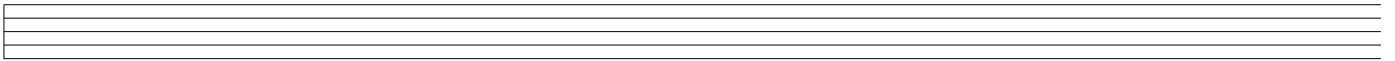
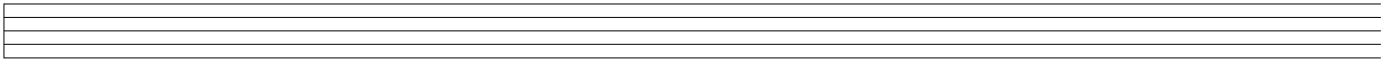
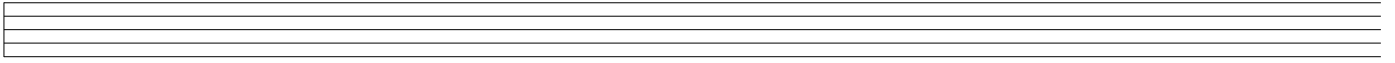
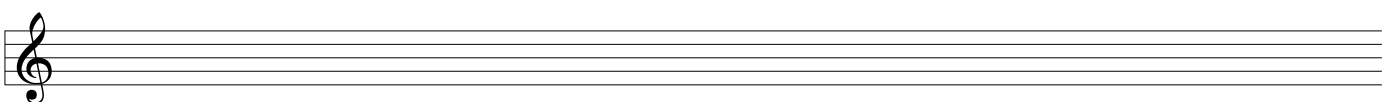
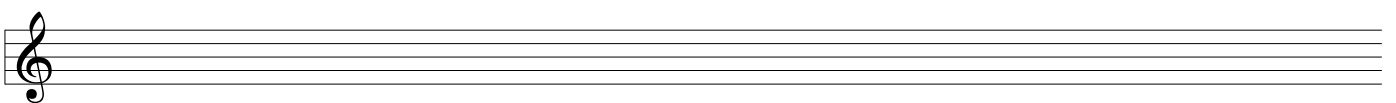
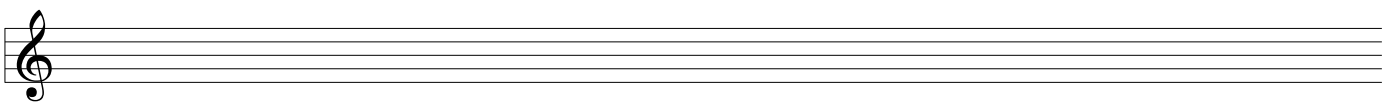
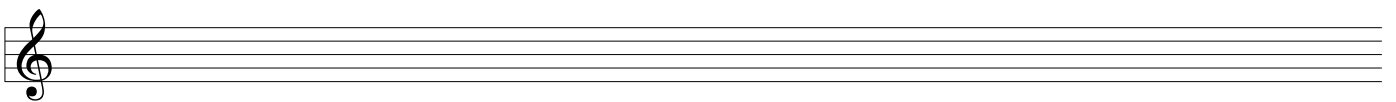
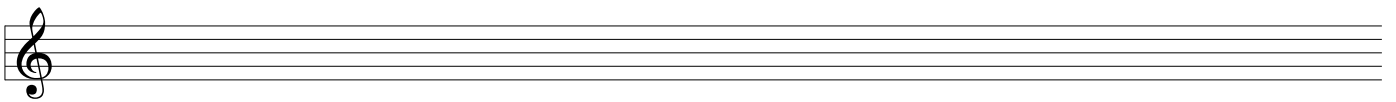
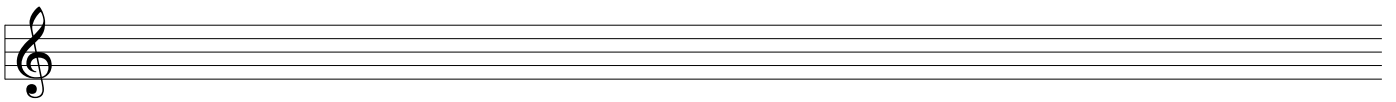
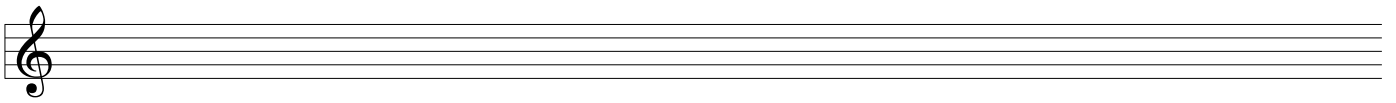
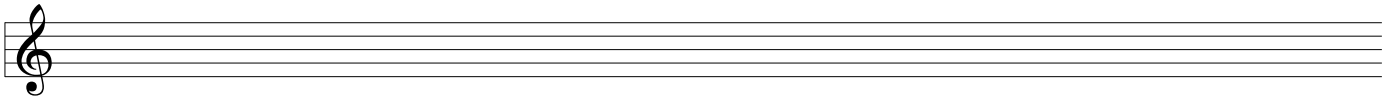
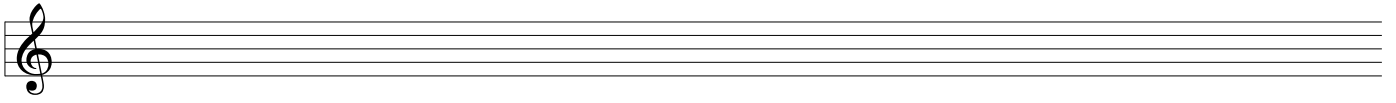
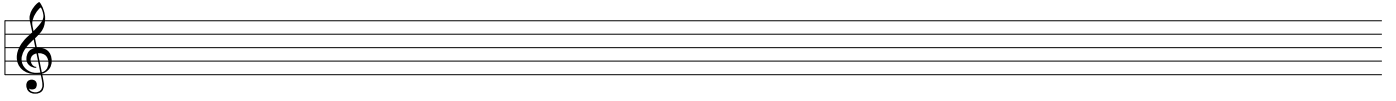
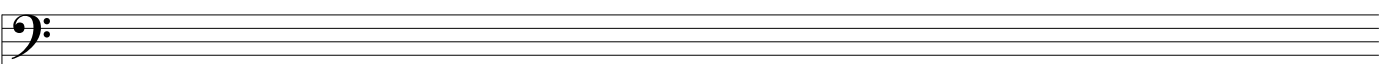
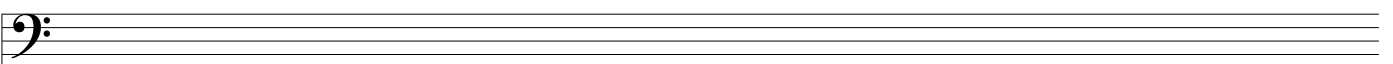
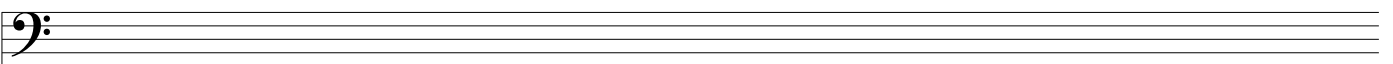
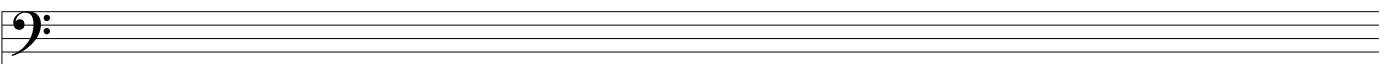
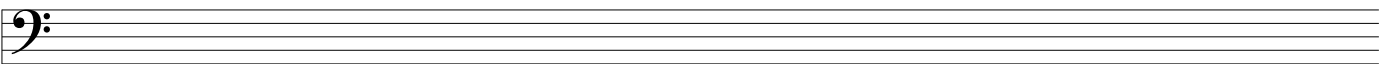
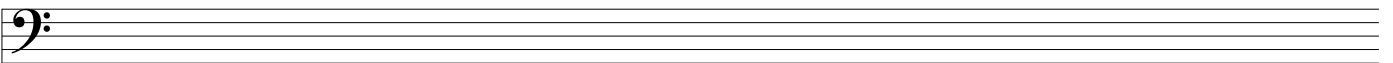
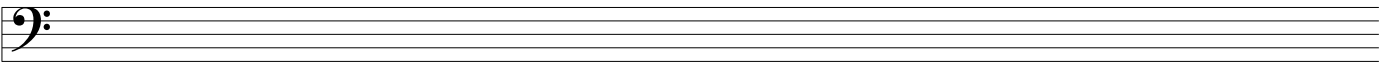
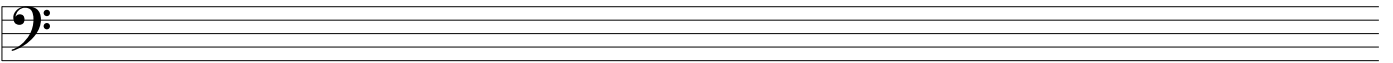
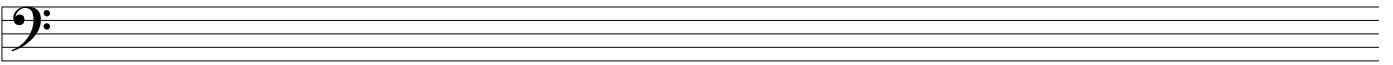
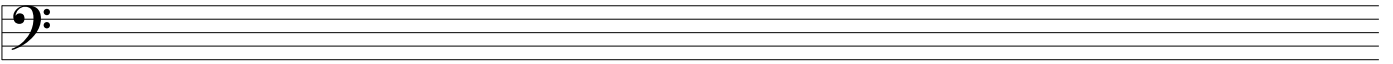


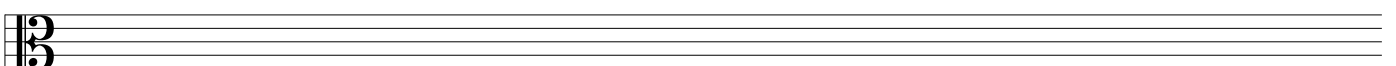
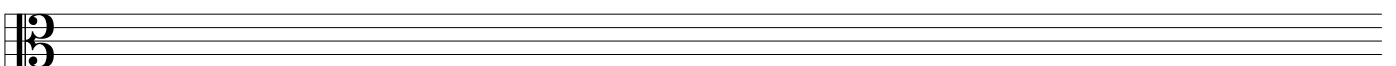
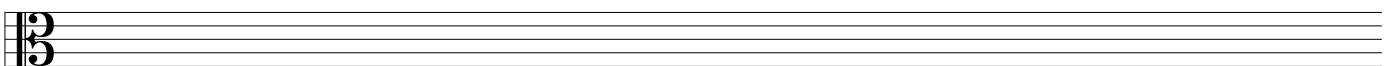
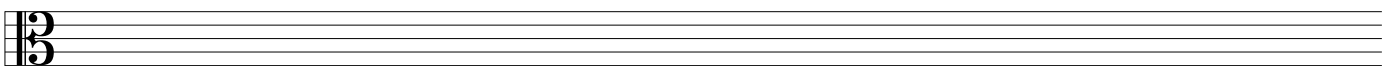
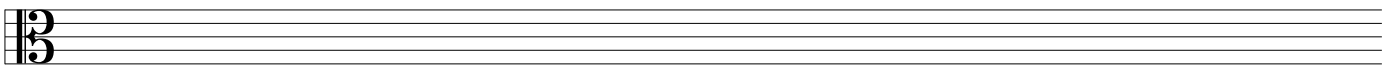
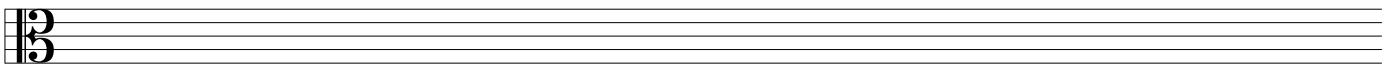
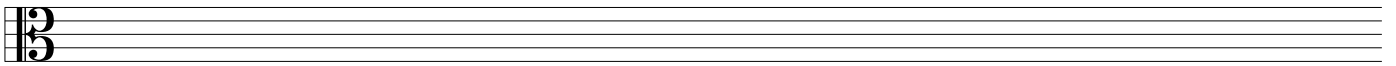
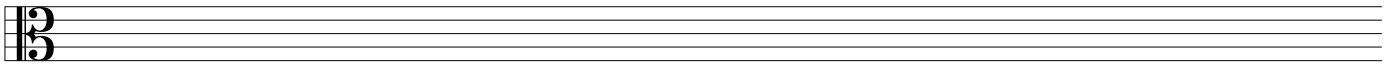
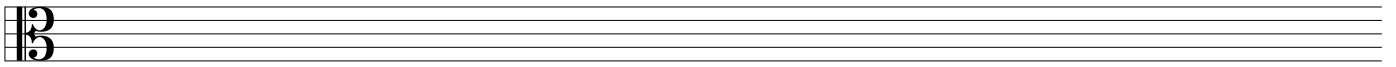
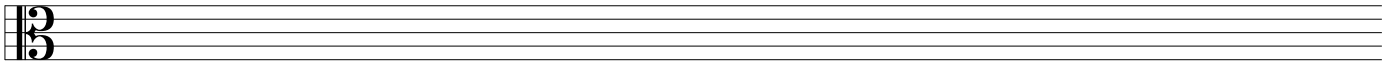
Notenpapier von **musikgrad.de**

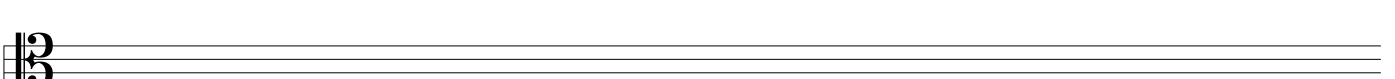
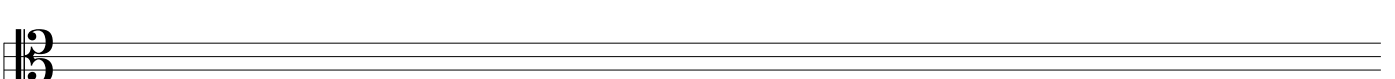
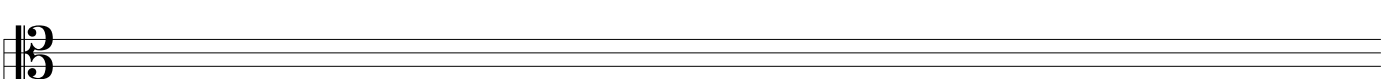
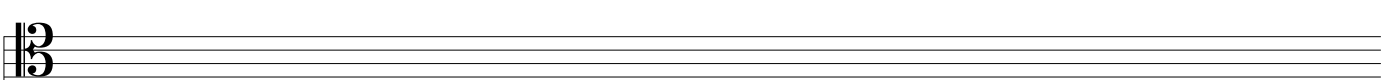
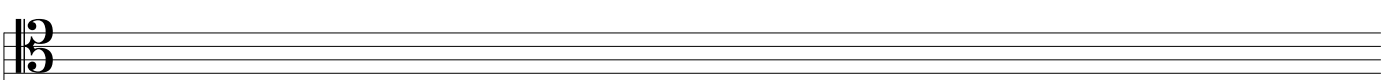
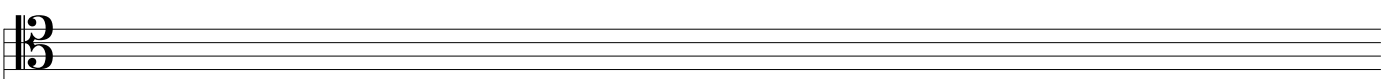
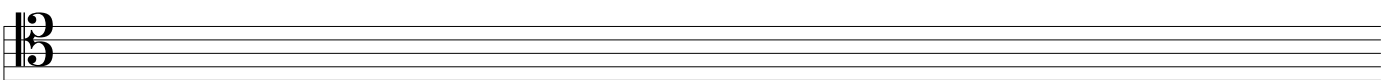
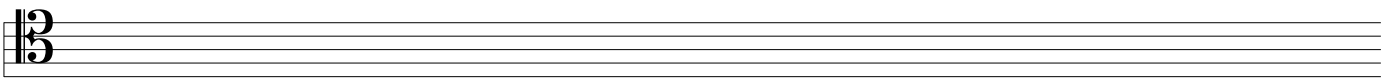
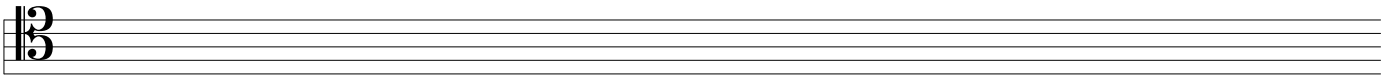
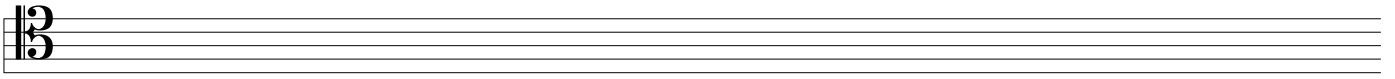
Type: Regular

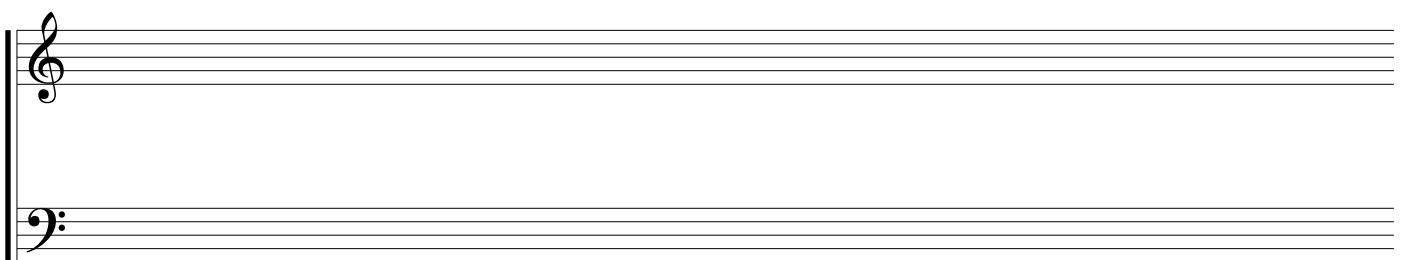
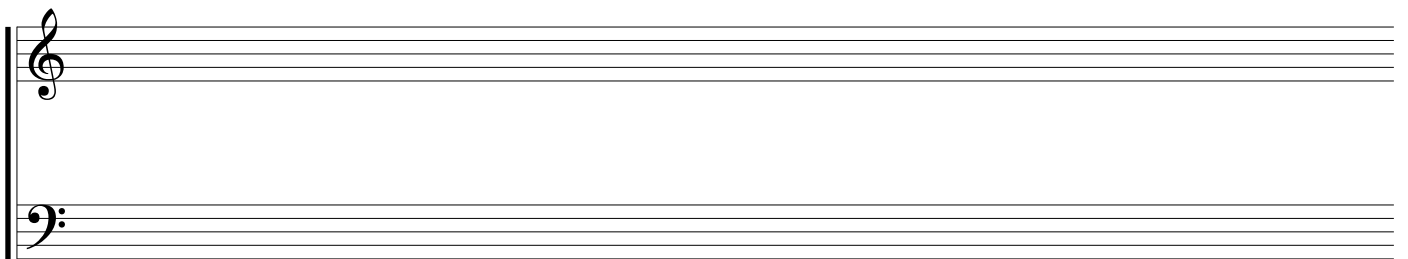
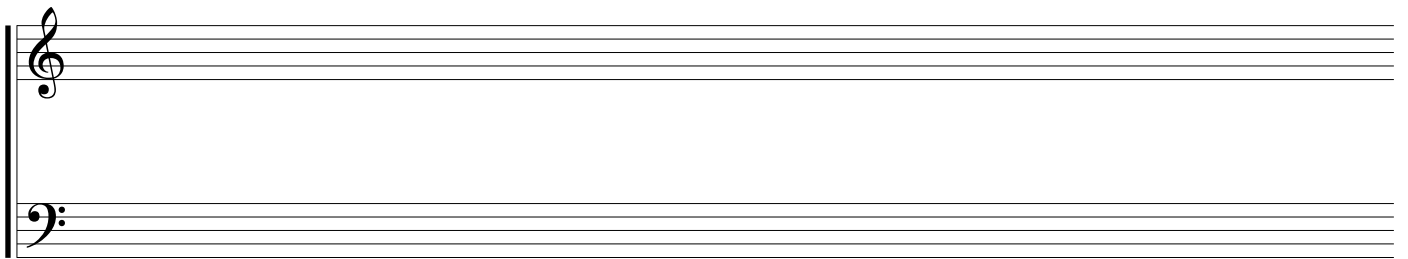
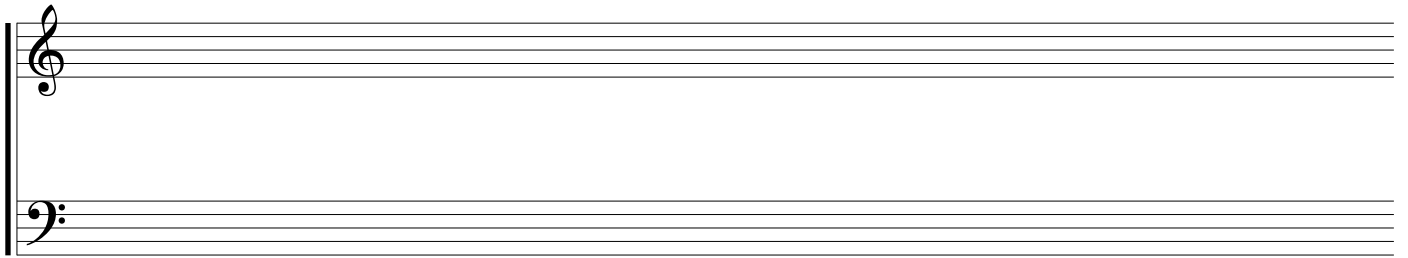
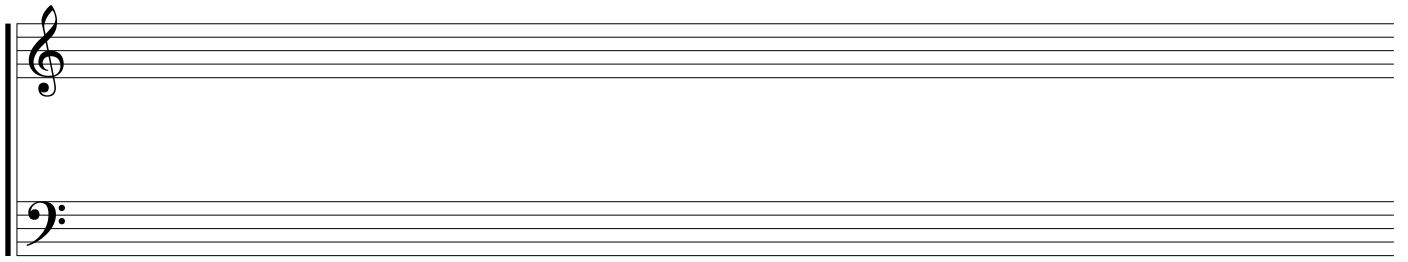


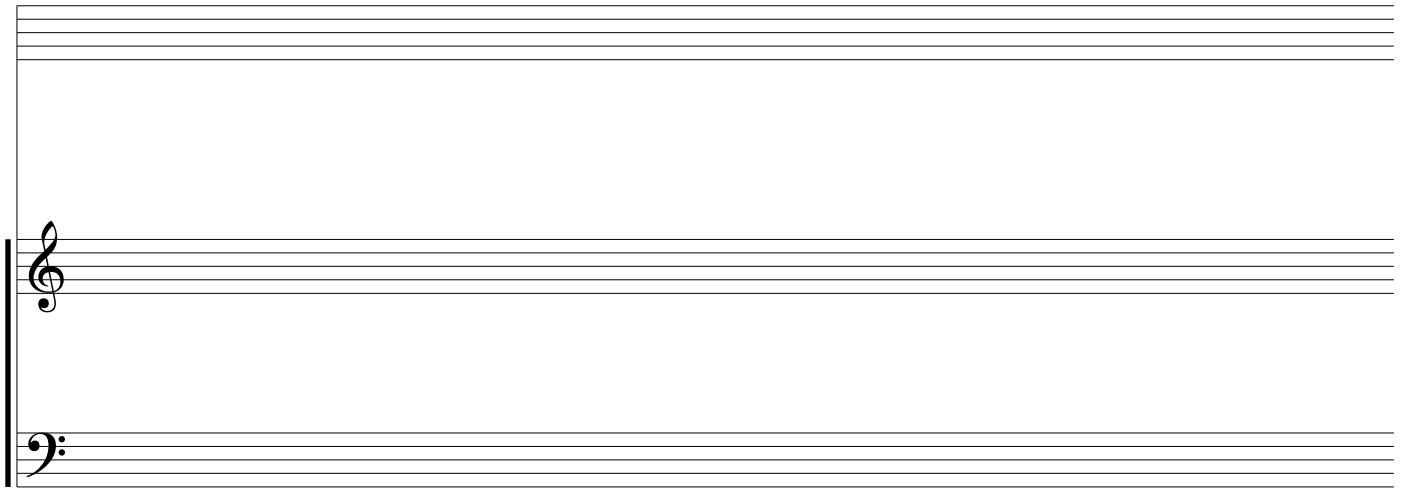




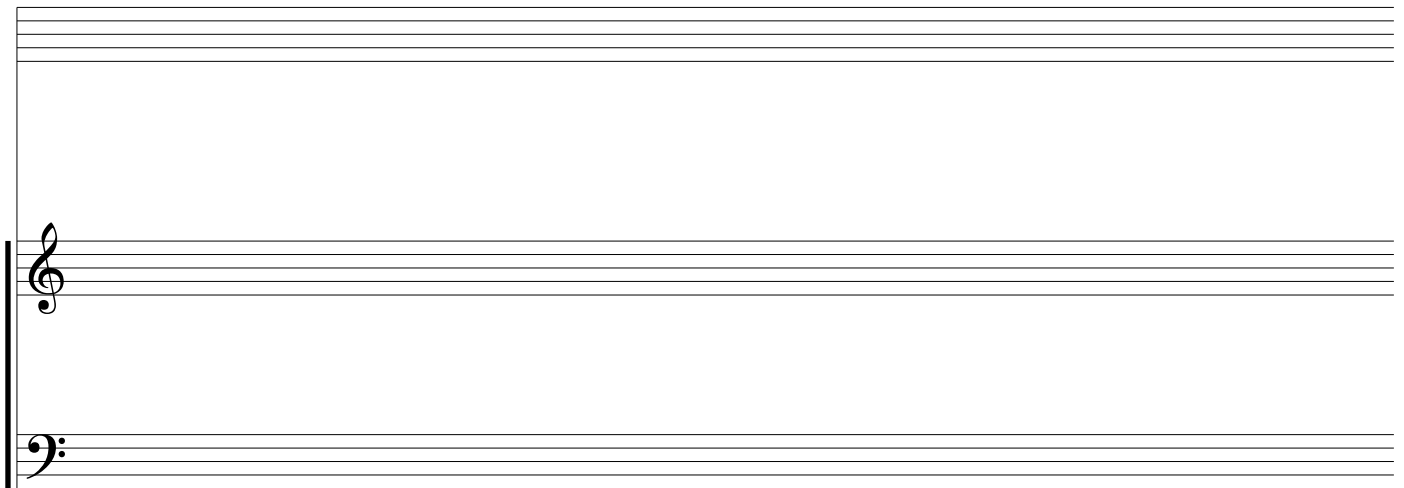




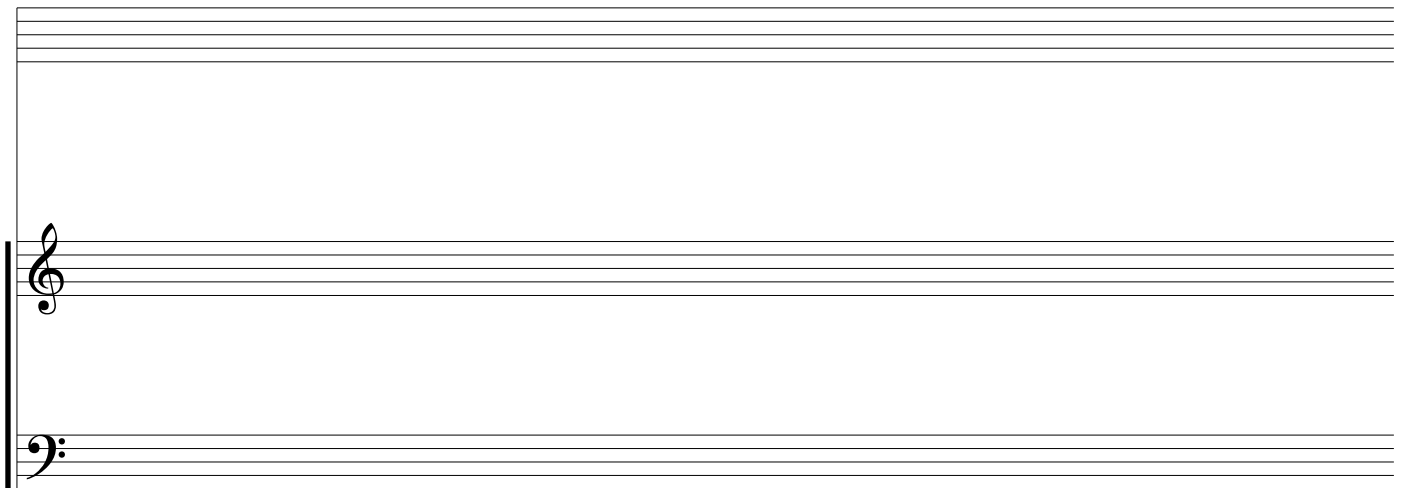




A musical staff system consisting of two staves. The top staff is a grand staff with five lines, and the bottom staff is a grand staff with five lines. A treble clef is positioned on the left side of the top staff, and a bass clef is positioned on the left side of the bottom staff. The staves are empty.



A musical staff system consisting of two staves. The top staff is a grand staff with five lines, and the bottom staff is a grand staff with five lines. A treble clef is positioned on the left side of the top staff, and a bass clef is positioned on the left side of the bottom staff. The staves are empty.



A musical staff system consisting of two staves. The top staff is a grand staff with five lines, and the bottom staff is a grand staff with five lines. A treble clef is positioned on the left side of the top staff, and a bass clef is positioned on the left side of the bottom staff. The staves are empty.



A musical staff system consisting of three staves. The top two staves are empty. The bottom staff contains the labels 'T', 'A', and 'B' stacked vertically on the left side.

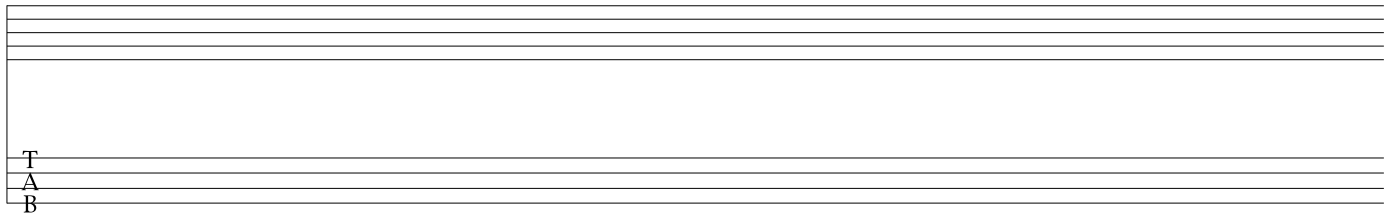
A musical staff system consisting of three staves. The top two staves are empty. The bottom staff contains the labels 'T', 'A', and 'B' stacked vertically on the left side.

A musical staff system consisting of three staves. The top two staves are empty. The bottom staff contains the labels 'T', 'A', and 'B' stacked vertically on the left side.

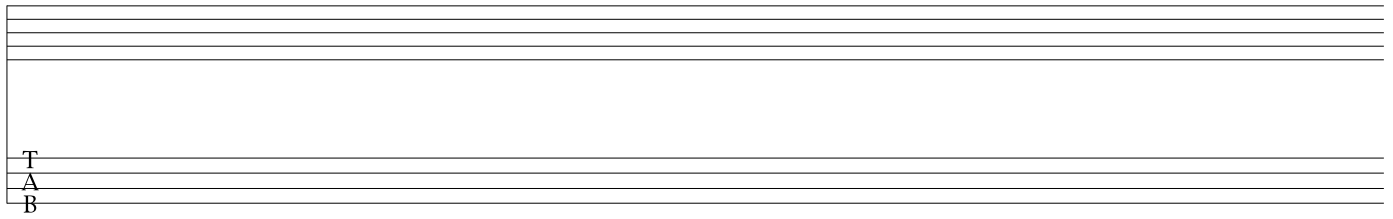
A musical staff system consisting of three staves. The top two staves are empty. The bottom staff contains the labels 'T', 'A', and 'B' stacked vertically on the left side.

A musical staff system consisting of three staves. The top two staves are empty. The bottom staff contains the labels 'T', 'A', and 'B' stacked vertically on the left side.

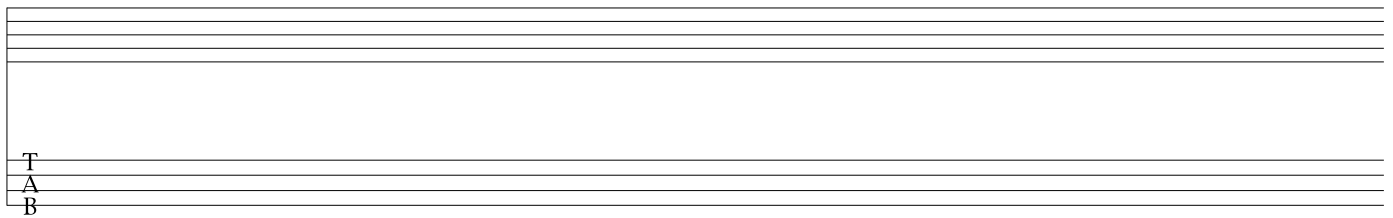
A musical staff system consisting of three staves. The top two staves are empty. The bottom staff contains the labels 'T', 'A', and 'B' stacked vertically on the left side.



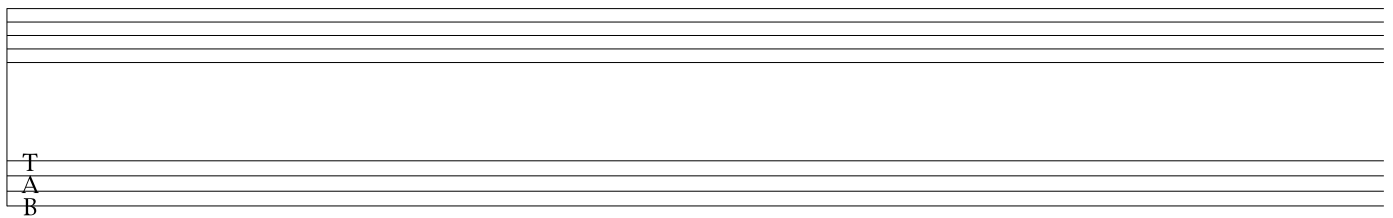
A musical staff system consisting of six horizontal lines. The top two lines are grouped together by a brace on the left. The bottom two lines are grouped together by a brace on the left. The letters 'T', 'A', and 'B' are stacked vertically on the left side, corresponding to the top, middle, and bottom lines respectively.



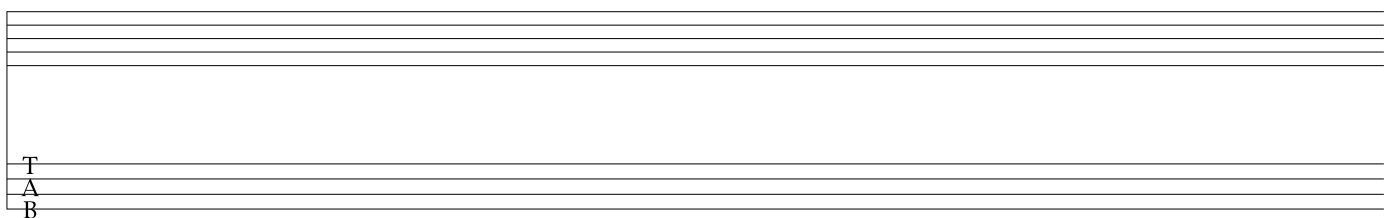
A musical staff system consisting of six horizontal lines. The top two lines are grouped together by a brace on the left. The bottom two lines are grouped together by a brace on the left. The letters 'T', 'A', and 'B' are stacked vertically on the left side, corresponding to the top, middle, and bottom lines respectively.



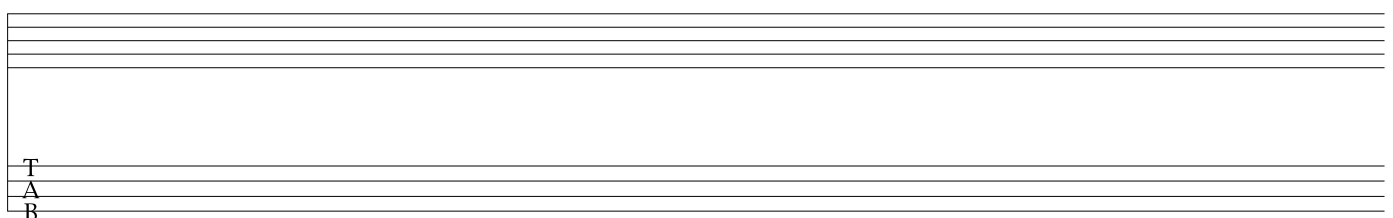
A musical staff system consisting of six horizontal lines. The top two lines are grouped together by a brace on the left. The bottom two lines are grouped together by a brace on the left. The letters 'T', 'A', and 'B' are stacked vertically on the left side, corresponding to the top, middle, and bottom lines respectively.



A musical staff system consisting of six horizontal lines. The top two lines are grouped together by a brace on the left. The bottom two lines are grouped together by a brace on the left. The letters 'T', 'A', and 'B' are stacked vertically on the left side, corresponding to the top, middle, and bottom lines respectively.



A musical staff system consisting of six horizontal lines. The top two lines are grouped together by a brace on the left. The bottom two lines are grouped together by a brace on the left. The letters 'T', 'A', and 'B' are stacked vertically on the left side, corresponding to the top, middle, and bottom lines respectively.



A musical staff system consisting of six horizontal lines. The top two lines are grouped together by a brace on the left. The bottom two lines are grouped together by a brace on the left. The letters 'T', 'A', and 'B' are stacked vertically on the left side, corresponding to the top, middle, and bottom lines respectively.